



2TE15 2TE18

2TE15

MAIN VEHICLE SPECIFICATIONS

Manufacturer			TOYOTA	TOYOTA
Model			2TE15	2TE18
Power Type			Battery	Battery
Operator Position			Rider Seated	Rider Seated
Tire Type	Front/Rear		Pneumatic	Pneumatic
Wheels (x = driven)	Front/Rear		2/2x	2/2x
Maximum Drawbar Pull	3-Minute Ratings	N <kg>	14600 <1500>	17640 <1800>
Rated Drawbar Pull (Towing Capacity)	60-Minute Ratings	N <kg>	3920 <400>	4900 <500>
Towed Weight	60-Minute Ratings	kg	20000	25000
	No Load	km/h	25	28
Travel Speeds	8 Ton Load	km/h	14.5	20
	14 Ton Load	km/h	11.0	14.5
Gradeability *		degree	26	32
Overall Length	w/ Hitch	mm	3615	3615
	w/o Hitch	mm	3395	3395
Front Overhang		mm	950	950
Rear Overhang		mm	1065	1065
Overall Width		mm	1420	1420
Overall Height		mm	1280	1280
Turning Radius (Outside)		mm	3295	3295
Hitch Length		mm	220	220
Height of Hitch		mm	450	450
Wheelbase		mm	1600	1600
Tread	Front	mm	1175	1175
	Rear	mm	1110	1110
Underclearance	Center of Wheelbase	mm	150	150
Floor Height		mm	395	395
Total Weight	w/ Battery	kg	3050	3400
	Without Battery	kg	1900	2250
Weight Distribution (With STD Battery)	Front	kg	1470	1430
	Rear	kg	1580	1970
Tires	Number	Front/Rear	2/2	2/2
	Size	Front	165R13-8PR (LT)	175R13-8PR (LT)
		Rear	7.00-12-12PR (I)	28x8-15-12PR (I)
Brake	Service (Foot)		Hydraulic	Hydraulic
	Parking (Hand)		Mechanical	Mechanical
Battery	Voltage/Capacity (5-Hour Ratings)	STD	V/AH	80/445
	Weight (STD Capacity Type)		kg	1150
Electric Motor	Drive		kW	11.8
Control Type	Drive			Transistor inverter

NOTE: * Computed values.

TOWED WEIGHT

Unit: kg

2TE15 Surface Condition (Dry Even Concrete)	Level Start		Start on Grade		
	3-Minute Ratings	60-Minute Ratings	3-Minute Ratings	60-Minute Ratings	
Level Road	20000	20000	—	—	
Grade (Degrees)	1°	20000	17100	9200	
	2°	20000	13300	5300	
	3°	18500	3300	10800	3500
	4°	14300	2000	8900	2000
	5°	11500	1200	7500	1200
	6°	9400	600	6400	600
	7°	7900	100	5500	100
	8°	6700	—	4700	—
	9°	5700	—	4100	—
	10°	4900	—	3600	—

NOTE: Towed weight data is the same for one or more trailers as well.

Unit: kg

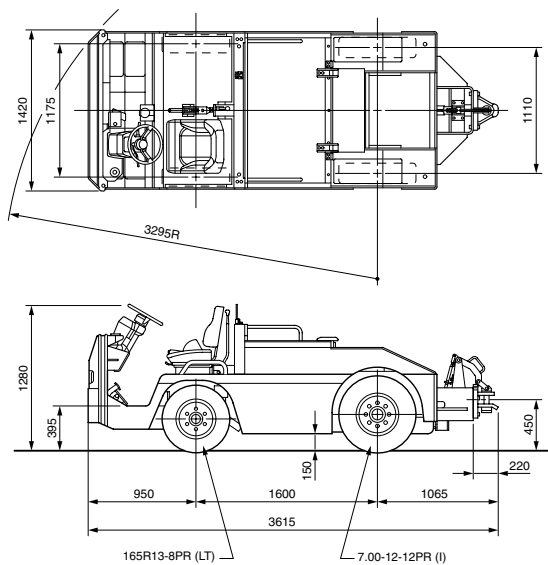
2TE18 Surface Condition (Dry Even Concrete)	Level Start		Start on Grade		
	3-Minute Ratings	60-Minute Ratings	3-Minute Ratings	60-Minute Ratings	
Level Road	25000	25000	—	—	
Grade (Degrees)	1°	25000	20600	11700	
	2°	25000	6800	16100	6800
	3°	22300	4300	13100	4300
	4°	17300	2800	10800	2800
	5°	13900	1700	9100	1700
	6°	11400	1000	7800	1000
	7°	9600	400	6700	400
	8°	8200	—	5800	—
	9°	7000	—	5100	—
	10°	6100	—	4400	—

NOTE: Towed weight data is the same for one or more trailers as well.

DIMENSIONAL DRAWINGS

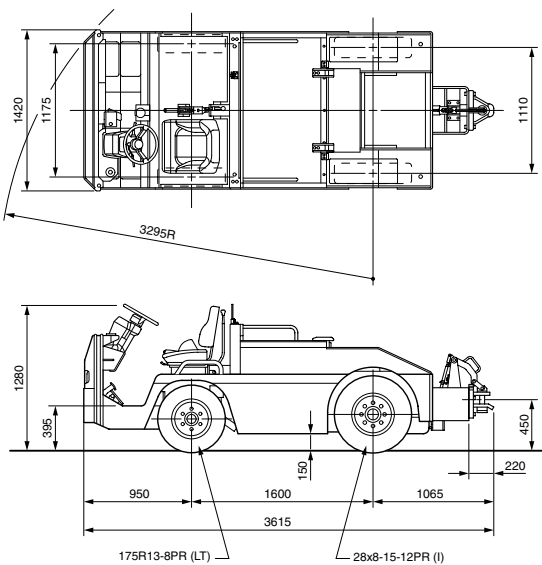
2TE15

Unit: mm



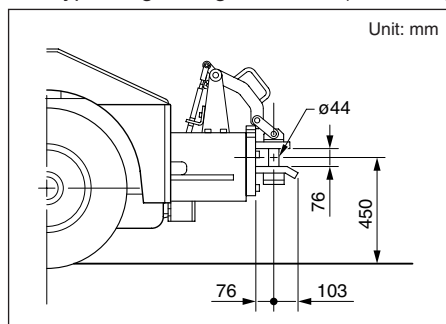
2TE18

Unit: mm

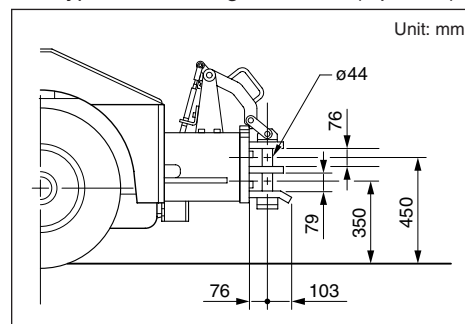


DRAWBAR

Pin Type Single Stage Drawbar (Standard)



Pin Type Double Stage Drawbar (Optional)



2TE15.18

INDEX: ○ Standard
● Available

STANDARD EQUIPMENT

2TE15.18

● Headlights ● Operator Presence Sensing System (OPS) ● Digital multifunction display [Battery capacity indicator, Speedometer, 2-speed travel speed control setting indicator, Parking brake indicator, Power select function indicator, Power select function, Traveling power control, 2-speed travel speed control, Key switch ON hour meter, Drive motor operation hour meter, Lap hour meter, Odometer, Trip meter, Clock, Battery overdischarge warning, Controller temperature warning (2TE18), Battery remaining-charge warning, Overheat warning, Parking brake off alarm, Parking brake on alarm, Return-to-neutral warning, Travel speed alarm, Diagnostic digital indicator] ● Key switch ● Electric horn ● Full hydraulic power steering ● Tilt steering column ● Dual-action parking brake ● Pencil holder ● Seat (with seat switch) ● Emergency unplug lever ● Battery hood damper ● Pin type single stage drawbar ● Non-slip sheet

OPTIONS AVAILABILITY CHART

Item	Model		
		2TE15	2TE18
BATTERY AND CONTROLLER			
Battery Roll-out	1)	●	●
Battery Charger (Off Truck Type)	2)	●	●
Right-hand Direction Switch		●	●
LIGHT AND INDICATORS			
Rear Combination Lights		●	●
Turn Signal Lights		●	●
Rear Working Light		●	●
Back-up Buzzer		●	●
BODY			
Rear-view Mirrors (Right and Left Sides)		●	●
Room Mirror	3)	●	●
Rear-under Mirror		●	●
Bumper	Front	4)	●
	Side	4)	●
	Rear		●
Steel Cabin	5)	●	●
Sunshade with Front and Top Glass	6)	●	●
Co-Operator's Seat	7)	●	●
Side Grip	8)	●	●
Heater with Defroster	9)	●	●
Document Box		●	●
Auxiliary Load Platform		●	●
Pin Type Double Stage Drawbar		●	●
Smoke Candle		●	●
Unit Indicator (mm/kg)		●	●
Name Plate (English)		●	●
OTHER			
E.E.C. Specification	10) 11)	●	●
Tool Set A		●	●

NOTE:

- 1) Cannot be combined with the "Bumper (Front, Side)".
- 2) Not available on "E.E.C. Specification".
- 3) Available for the "Steel Cabin" or "Sunshade with Front and Top Glass".
- 4) Set option.
- 5) When general specifications are selected, the "Top Glass", "Front Glass", "Front Wiper and Washer", "Rear Glass", "Assist Grip", "Hinged Door", and "Door Glass" are included.
When E.E.C. specifications are selected, the "Top Glass", "Front Glass", "Front Wiper and Washer", "Rear Glass", "Assist Grip", "Hinged Door", "Door Glass", "Rear Wiper and Washer", and "Rear Wiper Guard" are included.
- 6) The "Top Glass", "Front Glass", "Front Wiper and Washer", "Rear Glass", and "Assist Grip" are included.
- 7) Must specify "Side Grip".
- 8) Must specify "Co-Operator's Seat".
- 9) Available for the "Steel Cabin" only.
- 10) Must specify "Document Box".
- 11) Must specify "Israel".

TIRE AVAILABILITY

Model	Tire Arrangement	Pneumatic Tire		
		Tire Size	Rim Size (Type)	
2TE15	Front	165R13-8PR (LT)	13x4.5B (Divided)	○
	Rear	7.00-12-12PR (I)	12x5.00STB (Divided)	○
2TE18	Front	175R13-8PR (LT)	13x4.5B (Divided)	○
	Rear	28x8-15-12PR (I)	15x6.00SIR (Side-Ring)	○

AVAILABILITY OF BATTERY CHARGER (General)

Battery Voltage	Battery Capacity	AC Input Voltage	Manufacturer	2TE15	2TE18
V	AH/5HR	V			
80	445	200	GS YUASA	●	●
	470			●	●

MATCHING OPTIONS

(Column figures refer to matching with to the items listed at left)

Item	1)	2)	3)	4)	5)	6)	7)
E.E.C. Specification	1)						
Battery Charger (Off-Truck Type)	2) X						
Battery Roll-out	3)						
Sunshade with Front and Top Glass	4)						
Steel Cabin	5)			X			
Bumper (Front)	6)		X				
Bumper (Side)	7)		X				

INDEX: X Not available.

NOTE: For other matching please consult us.

SPECIFICATIONS OF BATTERY (General)

Battery Voltage V	Battery Capacity AH/5HR	Manufacturer	Battery Cell (Wet)			2TE15	2TE18
			Type	Length mm	Width mm		
80	445	GS YUASA	VGF 445	109	158	●	●
	470		VGI 470			●	●

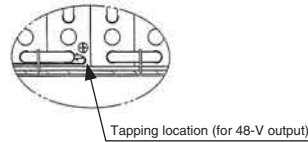
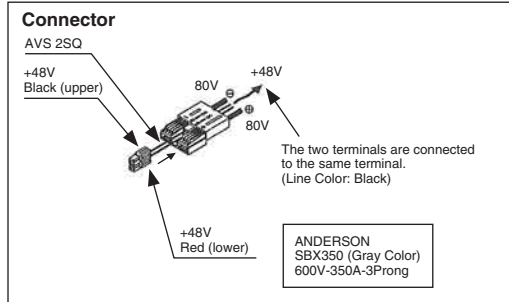
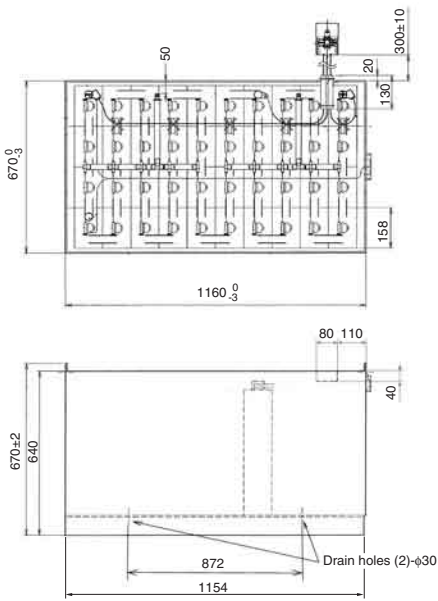
NOTE: Please note that the batteries described above are listed for battery-selection purposes, and have not been established either as standard or as optional.

Battery Connector Type

Battery	350A (ANDERSON)
----------------	-----------------

Dimensions of Battery Case

Unit: mm



Dimensions of Battery Compartment

Model	2TE15.18	
Width	mm	1170
Length	mm	680
Height	mm	680

BATTERY THAT CAN BE INSTALLED (E.E.C. Specification for Israel)

Battery Voltage V	Standard	Battery Capacity AH/5HR	Manufacturer	Battery Cell (Wet)		
				Type	Length mm	Width mm
80	BRITISH	408	OLDHAM	BRM 6	157.5	109
		378	CHLORIDE	THF 13N	158	109.5
	438	BRH 6		159	109	
	DIN	400	OLDHAM	CYQ 4	83	198

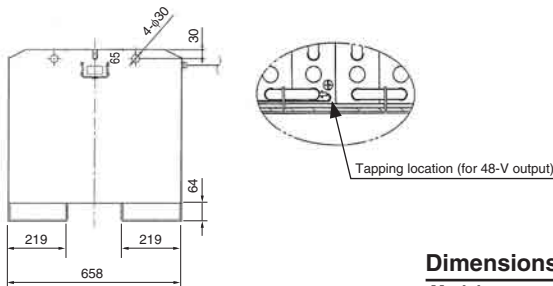
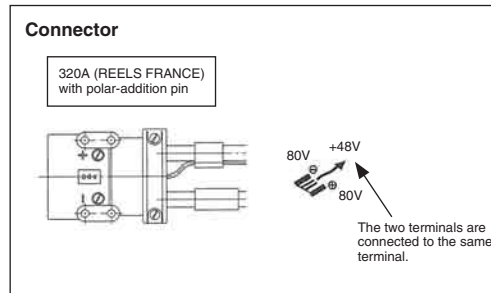
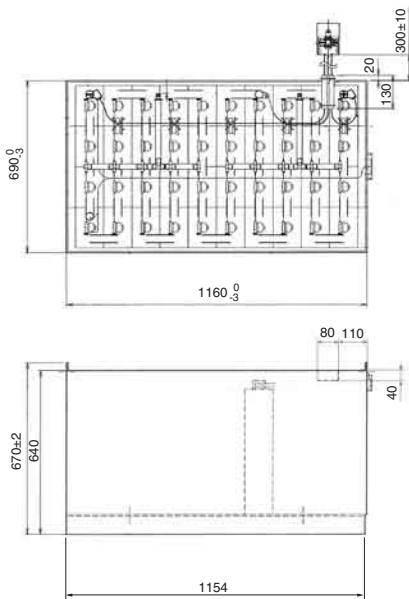
NOTE: Please note that the batteries described above are listed for battery-selection purposes, and have not been established either as standard or as optional.

Battery Connector Type

Battery	320A (REELS FRANCE)
----------------	---------------------

Dimensions of Battery Case

Unit: mm



Dimensions of Battery Compartment

Model	2TE15.18	
Width	mm	1170
Length	mm	700
Height	mm	680